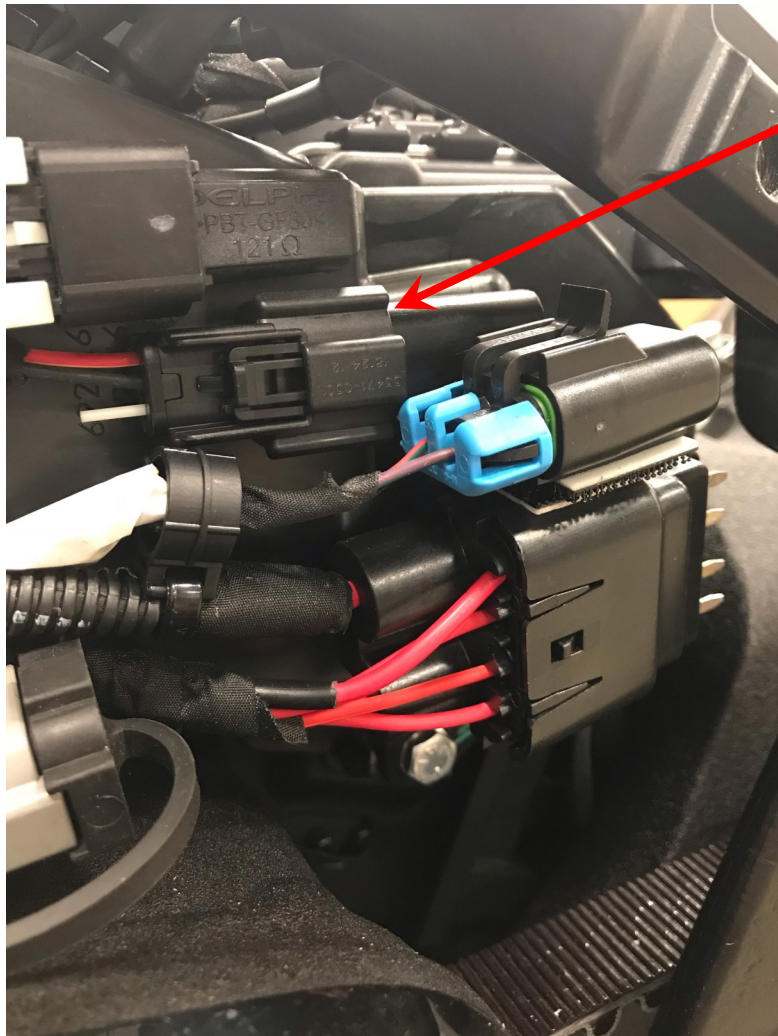


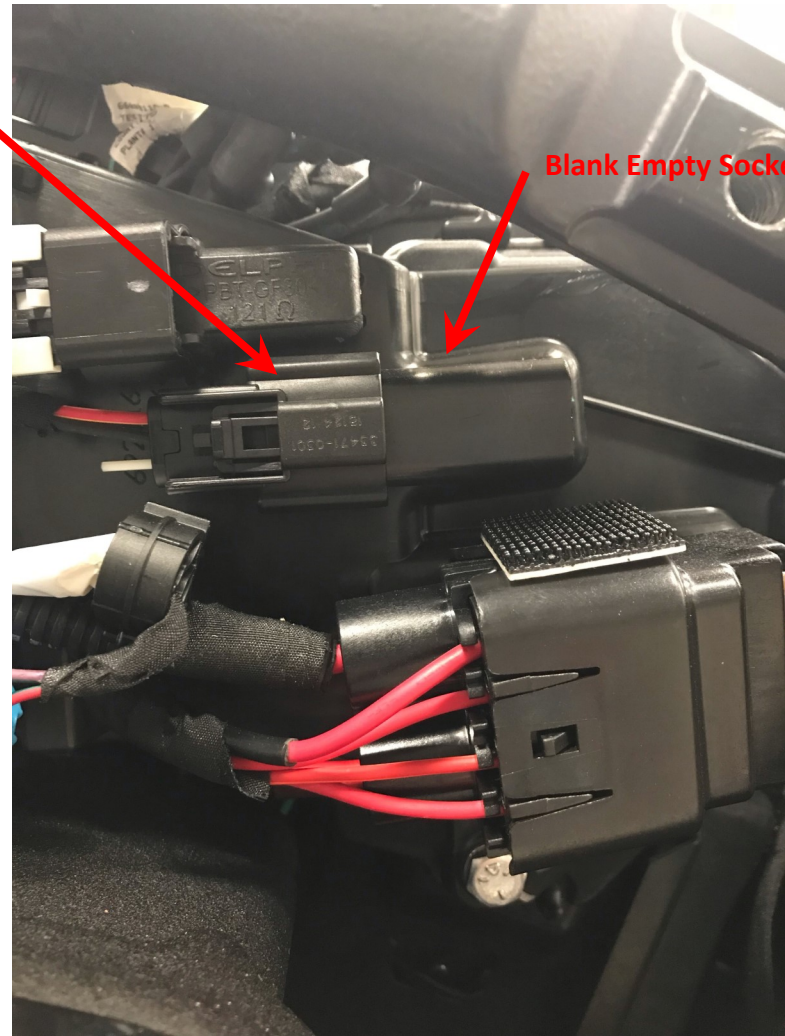
P/A Plug



The P/A plug that we utilize on 2018 and later Softails for our modules is located behind the left side panel cover below the seat.



P/A Plug

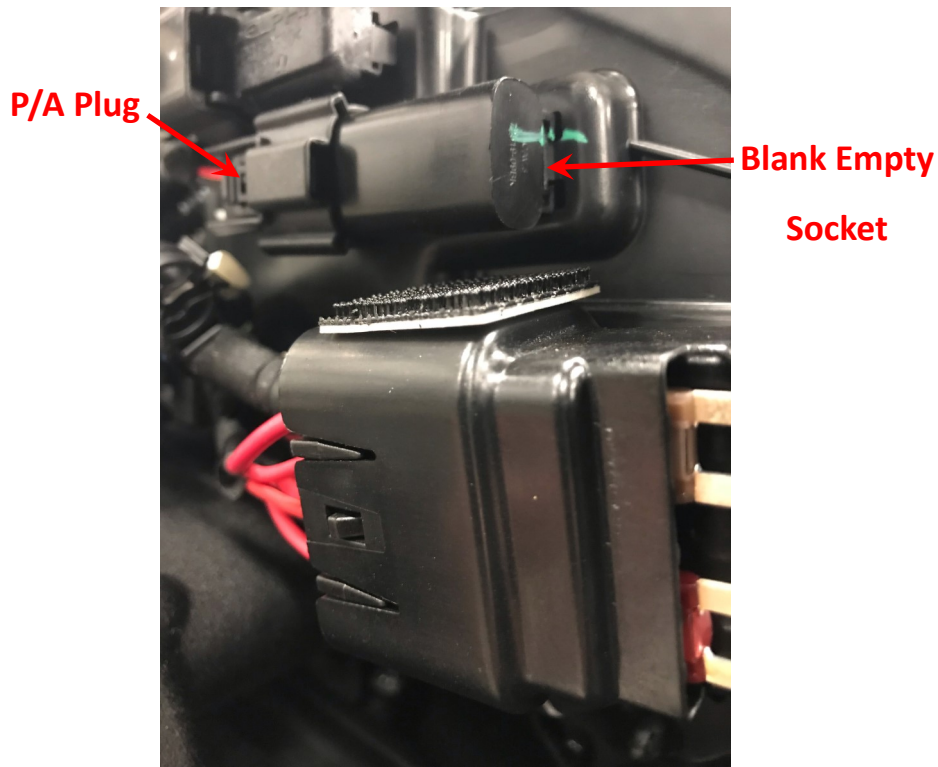


Blank Empty Socket

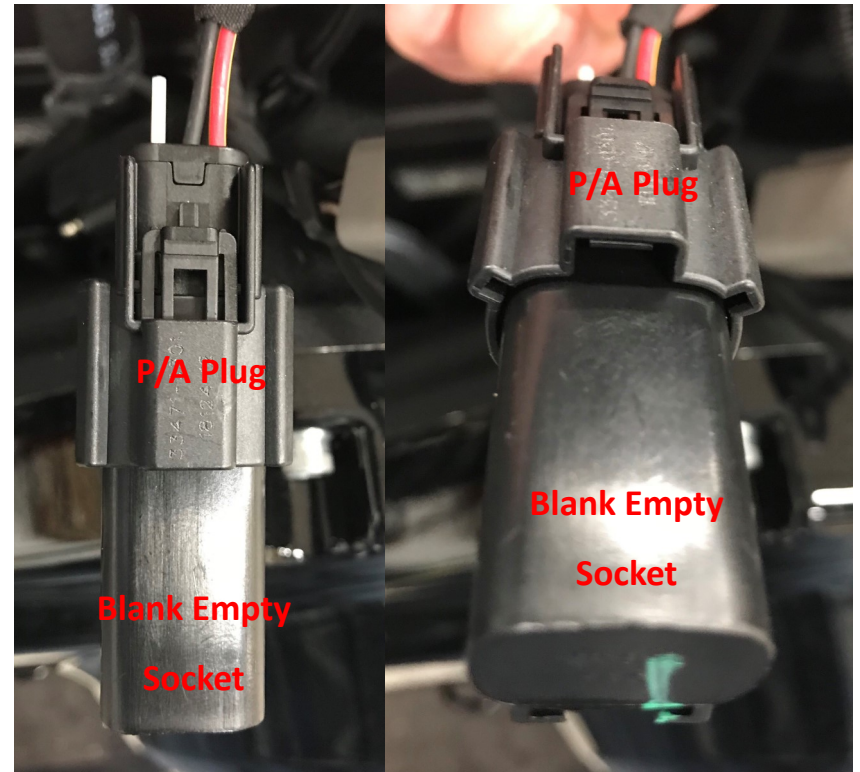
Here are some close up photos of the P/A Plug.

As you can see, it looks like it is already being used for something else. However, on a stock Softail with no additional accessories, it is not being used.

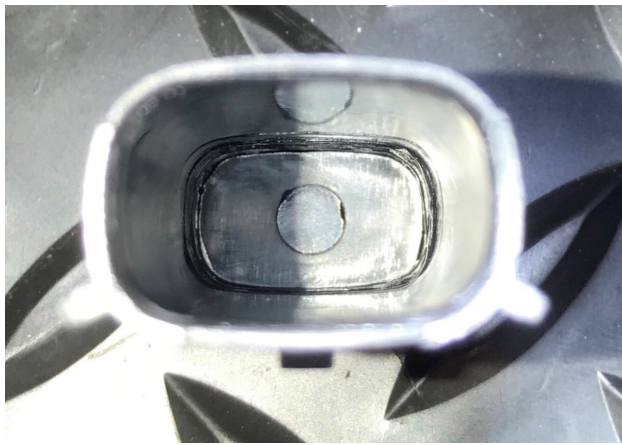
The P/A Plug is plugged into a blank empty socket to hold it place.



Here is another angle of the P/A Connector and Blank Empty Socket in its stock configuration mounted on the bike.



The P/A Connector and Blank Empty Socket removed from the bike but, still connected together.



Here is a picture of the inside the Blank Empty Socket.
As you can see, no wires or blue tooth device.